

## Reinforced Rear Sway Bar Mounts Installation

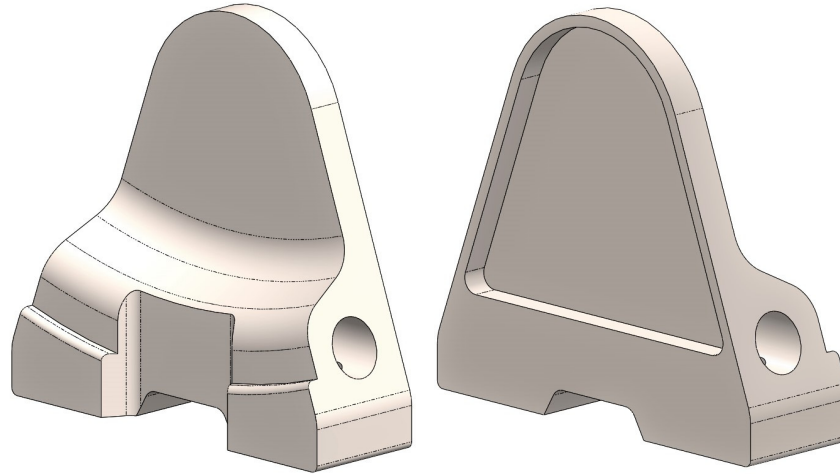
Part #2270028

### Cars applicable:

911/912/930 1965 thru 1989

### Parts list:

Quantity	Description
2	Reinforced Rear Sway Bar Mount



**Reinforced Rear Sway Bar Mount Kit**

### Tools Required:

- Die Grinder
- Rotary Wire Brush (stiff)
- Scarper
- Arc Welder
- Semi-Gloss Black Paint
- Undercoat (optional)

### Introduction:

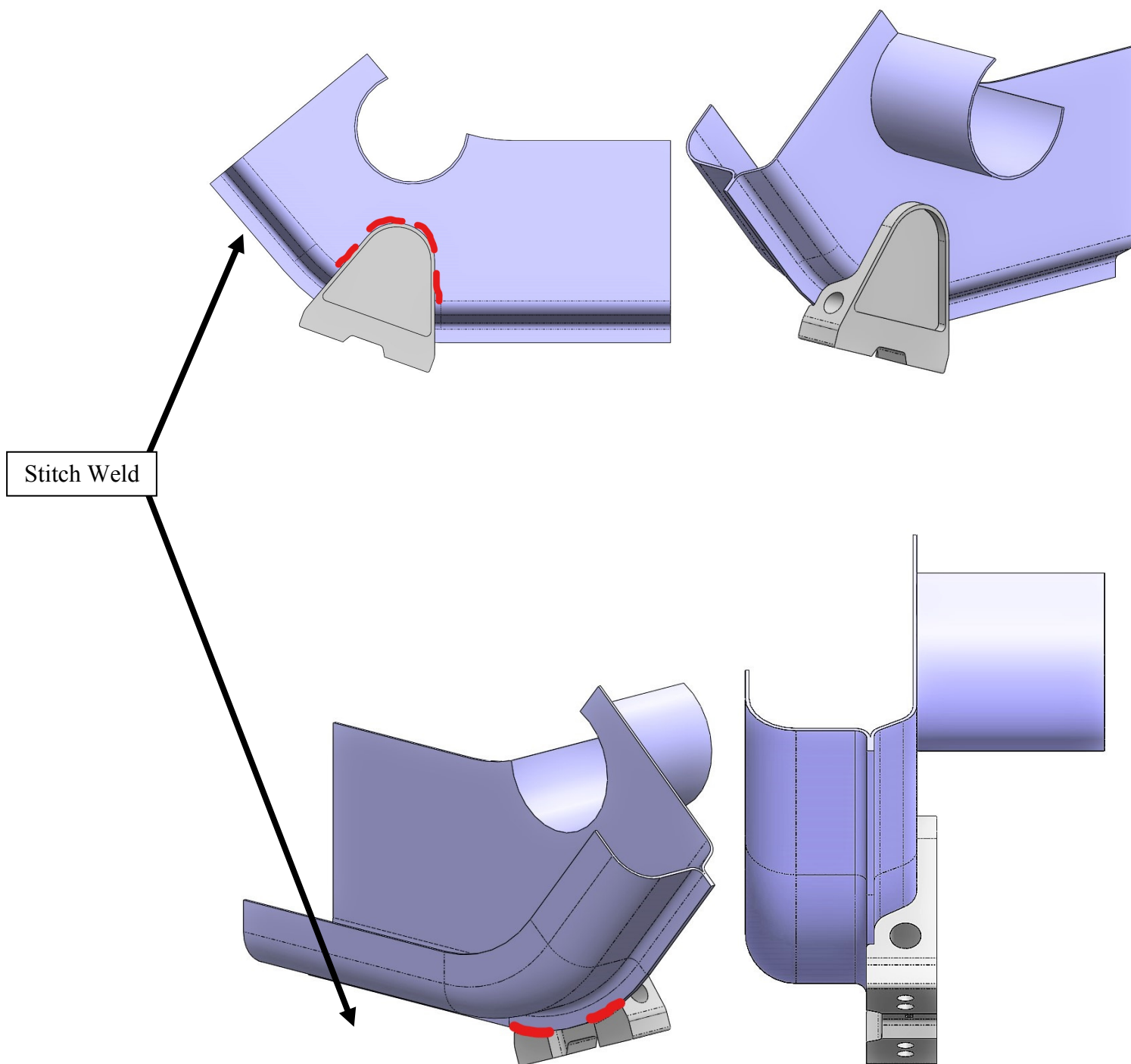
Congratulations on your selection of the Elephant Racing Reinforced Rear Sway Bar Mount Kit! This Elephant Kit provides an effective way to replace factory mounts damaged by the use of a larger diameter sway bar or aggressive track driving. The better scenario is to replace the weaker factory mounts before they are damaged especially if you intend to increase the diameter of your sway bars or run on race tires. The job is easier & more predictable to replace the OEM mounts before you tear away sheet metal.

This kit may be used on 1965 to 1971 series cars as well as 1972 to 1989 cars by welding the side of the mount with the matching profile to the frame inward. It will also accommodate both OEM early & late series & aftermarket sway bars.

### Step-by-Step Installation -

- 1 – Cut & grind away OEM mounts and associated welds. Repair any damage to surrounding metal if damaged by OEM mount being torn away.
- 2 – Scrape & wire brush away undercoat & paint in & around area mounts are to be welded.
- 3 – Bolt sway bar bushing blocks (with bar installed) to new mounts. Use photos & text below to determine the correct mount orientation for your vehicle.
- 4 – Clamp sway bar assembly with reinforced mounts into position on your vehicle. Be sure the sway bar has clearance to cross member at center of car. **It is very important to make sure that the sway bar & drop links have sufficient clearance to all surrounding components through the full range of suspension travel before welding reinforced mounting plates to frame.**
- 5 – When you are satisfied with the position of the assembly, tack weld the reinforced mounting plates to frame.
- 6 – Remove sway bar & bushing blocks from reinforced mounting plates & stitch weld at locations indicated in photos below.
- 7 – Clean welds for painting
- 8 – Recoat reinforced mounting plates, welds & surrounding bare metal with undercoat & black paint to prevent rusting
- 9 – Reinstall & torque sway bar to factory specifications.

**Photos for Positioning 1972-1989 911 Reinforced Rear Sway Bar Mounts (Left Side Shown)**  
**Note side toward frame, Position indicated is approximate, See step 4 in Step by Step Instructions**



**Photos for Positioning 1965-1971 911 Reinforced Rear Sway Bar Mounts (Left Side Shown)**  
**Note side toward frame, Position indicated is approximate, See step 4 in Step by Step Instructions**

